

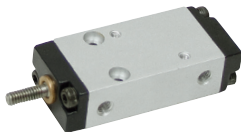
Humphrey Multi-Mount Air Cylinders

- New, HUMPHREY. Multi-mount style air cylinders. Aluminum construction, rated to 100 PSI working pressure. 10-32 ports.

Bore - Rod Dimensions

1/4" = 0.118" 3/8" = 0.197" 5/8" = 0.236"

Single Acting Push Only



ITEM	Bore	Stroke	R. Lgth.	Shpg.	Price
400175	1/4"	1/4"	2.14"	1/2 lb.	\$5.95
400173	3/8"	1/4"	2.337"	3/4 lb.	\$5.95
400174	3/8"	1/2"	2.587"	3/4 lb.	\$5.95
400176	5/8"	1/4"	2.533"	1/2 lb.	\$6.95
400168	5/8"	1/2"	2.783"	3/4 lb.	\$6.95

Double Acting

ITEM	Bore	Stroke	R. Lgth.	Shpg.	Price
400171	1/4"	1/2"	2.193"	1/2 lb.	\$5.95
400170	1/4"	3/4"	2.443"	1/2 lb.	\$5.95
400169	3/8"	3/4"	2.64"	1/2 lb.	\$5.95

Double Acting Double Rod



ITEM	Bore	Stroke	R. Lgth.	Shpg.	Price
400177	3/8"	3/4"	3.902"	1/2 lb.	\$8.95
400172	5/8"	1/2"	3.677"	3/4 lb.	\$9.95
400178	5/8"	3/4"	4.177"	3/4 lb.	\$9.95

12 mm x 2 3/4" DA Air Cylinder



ITEM 400222 \$5.95

- New, FESTO Model DO-12-74-PP-SA air cylinder. Stainless steel tubing with aluminum end-caps. 10-32 ports with adapters to 1/16" hosebarbs. Rod end threaded 4 mm, 0.70" pitch. Base end-cap tapped 4 mm, 0.70" pitch. Cushions at both ends of stroke.

SPECIFICATIONS

- Double Acting
- Bore 12 mm (0.472")
- Stroke 2 3/4"
- Rod dia. 4 mm (0.156")
- Press. 8 Bar (116 PSI) max
- Ports 1/16" hosebarbs
- Retracted lgth. 6 3/4" end-to-end
- Shpg. 1 lb.

3/4" Bore Air Cylinder



ITEM 400251 \$4.95

- Used BIMBA stainless steel. Extend port in base, retract port in rod end. P/N 53E743. Stroke 3/4", retracted lgth. 5" (rod end to base end).

SPECIFICATIONS

- Double acting
- Bore 3/4"
- PSI max. 250
- Rod diam. 1/4"
- Ports 1/8" NPT
- Threaded rod end 1/4"-28 x 1/2" long
- Nose mount threaded 5/8"-18
- Flat base 0.81" O.D.
- Shpg. 1 lb.

Double Acting Pneumatic Cylinders

- New. BUYERS double acting pneumatic cylinder. Has a cushion valve on each end. H Models have hinge mount accessory kit. Ideal for remote tailgate latches.

SPECIFICATIONS

- Double Acting

- Gland Retainer Tie-Rod
- Pressure 200 PSI

- Ports 1/4" NPT
- Rod End Clevis w/ Jam Nut

- Base End Clevis
- Pin Holes 1/2"

ITEM	Bore	Stroke	Rod Dia.	R. Lgth.	Shpg.	Price
400655	2.5"	6"	0.75"	14.5"	8.5 lbs.	\$91.40
400656	2.5"	8"	0.75"	16.5"	8.5 lbs.	\$91.80
400660	2.5"	8"	0.75"	16.5"	9.5 lbs.	\$103.25
400657	3.25"	6"	1"	16.25"	11 lbs.	\$112.35
400658	3.25"	8"	1"	18.25"	13 lbs.	\$132.45
400659	3.25"	8"	1"	18.25"	14 lbs.	\$150.05



2" x 8" Air Cylinder



ITEM 400664

\$89.95

- New, BIMBA, TRD, double acting air cylinder. Tie-rod construction. Foot mounted. Cylinder has a integrated cushion valve on each end.

SPECIFICATIONS

- Model CYL-9929418
- Double Acting
- Bore/Stroke 2" x 8"
- Rod 5/8" dia.
- Pressure 250 PSI max
- Ports 3/8" NPT Ports
- Rod 7/16-20 UNF thread
- Mounting Pattern 10 7/8" x 3 3/4"
- Overall Retracted Length 13 3/4"
- Shpg 6 lbs.

11.9 CFM 3 HP Single Stage Air Compressor



ITEM 400671

\$179.95

- New, B2800B 3 HP two cylinder single stage air compressor. Oil level sight glass.

SPECIFICATIONS

- Cylinders 2
- Stages Single
- Flow 11.9 CFM
- Pressure 131 PSI max.
- Power Req'd. 3 HP max.
- Speed 1570 RPM max.
- Rotation CCW
- Flywheel 11" A belt
- Port 1/2" NPT
- 1st Stage Bore/Stroke 2.36"/1.97"
- Mount Four 0.34" holes on 5 1/4" x 6 1/4" centers
- Size 10" x 11" x 13"
- Shpg. 25 lbs.

7.5 CFM, Single Stage Air Compressor



ITEM 400317

\$149.95

- New, V-twin cylinder single stage air compressor. Cast iron block and cylinder with aluminum head. Oil level sight glass.

SPECIFICATIONS

- One stage, two cylinders
- Flow: 7.5 CFM open flow
- Pressure 115 PSI max.
- Power req'd. 2 HP max.
- Speed 980 RPM max.
- Rotation CCW
- Flywheel 10 1/2" A belt
- Port 1/2" OD tube
- 1st stage bore/stroke 55mm x 45mm
- Mount 6 7/8" x 3 5/8"
- Size 13" x 10 1/2" x 10 1/2"
- Shpg. 37 lbs.

7.1 CFM, Single Stage Air Compressor



ITEM 400666

\$149.95

- New, B2800 2 HP two cylinder single stage air compressor. Oil level sight glass.

SPECIFICATIONS

- Cylinders 2
- Stages Single
- Flow 7.1 CFM
- Pressure 90 PSI max.
- Power Req'd. 2 HP max.
- Speed 1000 RPM max.
- Rotation CCW
- Flywheel 11" dia. A belt
- Port 1/2" NPT
- 1st Stage Bore/Stroke 2.36"/1.97"
- Mount Four 0.34" dia. holes on 5 1/4" x 6 1/4" centers
- Size 10" x 11" x 12 1/2"
- Shpg. 23 lbs.

Air Filter Pair

ITEM 400320

\$4.95

- New, pair of plastic housing air filters for air compressors. Uses paper element.

SPECIFICATIONS

- 1/2" NPT connection
- 1/2" inlet tube

4" dia x 2" Shpg 1 lb.



Regenerative Blower



ITEM 501685

\$249.95

- New, Centraction 3-phase side channel regenerative blower. Frequently used for aeration, pneumatic conveying, and industrial vacuum systems.

SPECIFICATIONS

- Brand Centraction
- Model Number 2RB730-7AT26Z
- Ports 2.4" O.D.
- Size 17 1/2" x 16 1/2" x 14 1/2"
- Power 4.0 HP (3.0 kW) @ 50 Hz 4.6 HP (3.45 kW) @ 60 Hz
- Voltage 200-260 Volt AC 3 Ph/ 11.4 Amps @ 50 Hz 350-450 Volt AC 3 Ph/ 6.5 Amps @ 50 Hz 230-290 Volt AC 3 Ph/ 10.8 Amps @ 60 Hz 400-500 Volt AC 3 Ph/ 6.2 Amps @ 60 Hz
- Vacuum Performance -6.2 in. Hg (-210 mbar) @ 50 Hz -5.3 in. Hg (-180 mbar) @ 60 Hz
- Pressure Performance 5.9 in. Hg (200 mbar) @ 50 Hz 5.0 in. Hg (170 mbar) @ 60 Hz
- Shpg 96 lbs.

Aftercooler

ITEM 400668

\$249.95

- New. aftercooler for Quincy 40-50 hp air compressors.

SPECIFICATIONS

- Model Number 2013500723
- Pressure 200 PSIG
- Temperature 250° F
- Flow Unknown
- Ports 1 1/2 NPT
- Top Mounting Holes Three 0.395" holes on 6 1/4" centers
- Bottom Mounting Holes Two 0.395" holes on 2 3/4" centers
- Size 25 1/2" x 14" x 3 1/2"
- Shpg 35 lbs.

